

CONNECTIONS

SPRING 2017



Volunteering
enriches everyone

Make a difference
and support our mission

Remembering
Dick Brustad

The Albert J. Hofstede family

A timeless honor
for public service

*Catholic Eldercare renaming
its nursing home*




Catholic Eldercare
Nurturing Life's Ageless Spirit

Dear Friends:

In the late 1970s, Al Hofstede with Sister Ruth Roland, Tom Glodek, and Bob Hannah set out on their faithful earthly mission to rally support and establish a much-needed faith-based nursing home to care for and minister to Northeast Minneapolis seniors. Their belief in positive change became a defining characteristic of Catholic Eldercare, an attribute that has long distinguished this organization. We're glad that embracing change is a part of our culture, especially as we stare down the changing needs of our growing communities. But as we say 'hello' to friends, new opportunities, and new directions, we'll always remember those whose shoulders we stood on.

In this issue, we say goodbye to our dear friend and founder Al Hofstede, who left his mark on this great city through his public service and philanthropic pursuits. And this spring, we will have the honor to memorialize him by renaming our skilled nursing and memory care residence The Albert J. Hofstede Care Center and the original campus The Albert J. Hofstede Campus.

We pay respects to Dick Brustad, a longtime Catholic Eldercare board member and Minneapolis fixture, who made it his life's quest to bring safe and affordable housing to people in need. When Catholic Eldercare was in its early development stages, Dick was at the table sharing his important insights on affordable housing and elderly projects.

Those who have participated in our therapy program have stayed independent longer and are able to safely age in place as a result. And at the end of the day, isn't that what we all want? Learn more about our state-of-the-art care on page 8.

Saint Irenaeus of Lyons once said, "The Glory of God is man (and woman) fully alive." The Catholic Eldercare mission tells of its determination to shape and sustain a life-giving environment where older adults can feel fully alive. We help one another experience life and experience it to the full.

We're grateful to have you walk with us.

Sincerely,



Suzanne Snyder

Suzanne Snyder
Chair, Board of Directors



Dan Johnson

Dan Johnson
President and Chief Executive Officer

P.S. If you have a FACEBOOK account, we encourage you to 'Like' Catholic Eldercare. So much happens between the spring and fall newsletters, FACEBOOK is a great way to stay informed about the engaging activities and programs residents enjoy.



In this issue:

Honoring "An Expression of Faith"

Catholic Eldercare renaming nursing home to 'The Albert J. Hofstede Care Center'

Page 4

Transitional Care Unit Eases Return to Home

Delivering another link in the continuum of care.

Page 6

State-of-the-Art Care

A closer look at the critical role of physical therapy.

Page 8

SMALL STEPS BIG STRIDES



It's time to celebrate our 15th Annual Fall Luncheon!

Catholic Eldercare's small acts of kindness every day, positively impacts the quality of life for those in our care. Join us for our 15th anniversary Luncheon and experience how we are elevating the standard of care within our community.

September 14, 2017

Earle Brown Heritage Center in Brooklyn Center, MN

Early RSVP to Angela Ali at 612.362.2430 or
aali@catholiceldercare.org



President and CEO:

Dan Johnson

Director of Advancement:

Kristine Smyth

Information Specialist:

Angela Ali

Writer/Editor/Graphic Design:

imagewerks
MARKETING

Catholic Eldercare

817 Main St. NE
Minneapolis, MN 55413
Phone: 612-379-1370
Fax: 612-362-2486

Connections is a biannual publication of Catholic Eldercare, Inc., 817 Main St. NE, Minneapolis, MN 55413. The purpose of this publication is to provide useful information and resources to the Catholic Eldercare community. For more information on the publication or to request additional copies, suggest article ideas, or to be removed from the mailing list, contact Angela Ali at aali@catholiceldercare.org or call 612-362-2430.

If you no longer wish to receive Connections, you may call 612-362-2430 or email Angela Ali at aali@catholiceldercare.org. Doing so will not affect your ability to receive services from Catholic Eldercare. You may notify us at any time should you wish to resume receiving Connections.

Equal Opportunity Employer

Nurturing Life's Ageless Spirit



Honoring “An Expression of Faith”

Catholic Eldercare is renaming the nursing home to ‘The Albert J. Hofstede Care Center’

The man who deeply cared about seniors and affordable housing, especially in the Northeast neighborhood where he was raised, will receive a timeless honor for his life of public service.

Catholic Eldercare will rename its MainStreet campus and nursing home after Albert J. Hofstede, the former Minneapolis Mayor, City Council member, and the second chairman of the Metropolitan Council. Hofstede was the city’s first Catholic Mayor in the ‘70s and remains the youngest person to ever hold that office at 34. He passed away on September 3, 2016 at the age of 75.

The new Albert J. Hofstede campus includes the Albert J. Hofstede Care Center, the MainStreet Lodge assisted living community, the Transitional Care Unit, the Adult Day services, an independent living residence to be built later this year and the St. Anthony of Padua Chapel.



Catholic Eldercare Albert J. Hofstede Care Center

“We are happy and humbled to rename our campus in honor of Al Hofstede who served the City of Minneapolis, the greater metropolitan area, and the Northeast community so faithfully during his lifetime,” says President and CEO Dan Johnson.

“Al had a passion for caring for the city’s elderly population. And he was committed to establishing affordable housing for those senior Northeast residents who lived in this great neighborhood, worked hard all their lives, and retired here.

He drew others in to partner with him, friends like Robert Hannah, Thomas Glodek, and Sister Ruth Roland, to serve as co-founders. So it’s fitting to memorialize him in this manner, because without his tireless efforts we would not be here today.”

Emma Hofstede, Mayor Hofstede’s widow, says the family is honored and happy that the campus will bear Al’s name.

“We thought when the Transitional Care Unit opened last year that maybe they would name it

after him, but naming the entire complex after him really caught us by surprise!” Hofstede says. “He would be so pleased with this recognition. It’s a real testament to his caring for the elderly in Northeast Minneapolis. He was so dedicated to this community, after being raised on California and Lowery. He had a lifelong passion to serve, but Al always cared about the needs of the poor. It was an expression of his faith.”



A campus renaming event honoring Hofstede is being planned, please stay tuned to our website and Facebook page for more information to come: www.catholiceldercare.org and facebook.com/CatholicEldercare.

Northeast's Only Fully-Dedicated Transitional Care Unit Eases Return to Home

Since its grand opening last October, Catholic Eldercare's Transitional Care Unit (TCU) has been providing care to its guests who need a step of care between hospitalization and home.

Located at 149 8th Ave. in Northeast Minneapolis, the 24-bed care center combines the latest in rehabilitation services with all the warmth and comforts of home.

"Our community is fortunate to have the TCU as part of the continuum of care," Lora Lallak said, director of transitional care and rehabilitation services. "After years of creating model senior living spaces, this addition has made a significant impact on long-term care census."

To date, the unit has cared for over 70 guests and the feedback from guests and their families has been overwhelmingly positive.

"I enjoyed socializing with other patients and getting to know their families," said one grateful TCU guest. "And I had a ring of specialists around me who all knew my story so I didn't have to keep repeating it."



Guests are typically admitted to the TCU following a hospital stay. The average length of stay ranges from 15 to 18 days, depending upon the individual's customized care plan.

"We are happy to deliver yet another link in Catholic Eldercare's continuum of choices for the people in Northeast and downtown who have worked hard their whole lives and now need the finest support that can be offered to improve recovery and maintain an acceptable quality of life," President and CEO of Catholic Eldercare Dan Johnson said.



For more information on our TCU, please call 612.379.1370 or head to www.catholiceldercare.org

BREAKING GROUND: New Riverside Apartments Promise Amenities, Affordability

Northeast Minneapolis will soon look more inviting for independent seniors 62 and older! We're excited to announce that construction of a new 69-unit apartment building will break ground this August and open fall 2018.

Located at 2nd St. and Broadway Ave., these one- and two-bedroom market rate units will offer much needed independent living spaces to Northeast seniors. With a focus on wellness, the community's host of high-end amenities will include: a wide range of dining options; housekeeping and healthcare services; large, sunlit exercise spaces; a rooftop deck area; a large glass-walled clubroom; a sheltered grilling patio and fire pit; an indoor-outdoor dog park and pet grooming station; a creative arts studio and more.

CEO Dan Johnson says that the yet-to-be-named community will be a great fit for those who want to live close to downtown and have easy access to the area's many amenities—without paying downtown rents.

"We are pleased to be offering this new resource to the community we serve now," says Johnson. "It will allow current residents of Northeast and others the opportunity to age in community, while expanding Catholic Eldercare's continuum of care."

Watch this space for updates as construction of this exciting project continues!



State-of-the-Art Care:

A Conversation About Catholic Eldercare's Therapy Program with Physical Therapist Melissa Merriman-Flory

Therapy plays a critical role in helping us stay healthy, stave off injury, and maintain a high quality of life. Those who have actively participated in Catholic Eldercare's therapy program have stayed independent longer and are able to safely age in place. And at the end of the day, isn't that what we all want?

Our team is highly motivated to assist patients in realizing their therapy goals. Physical therapists like Melissa Merriman-Flory, treat each individual one-on-one and combine occupational, physical, and speech therapies to realize optimal recovery.

CE: Who is Catholic Eldercare's therapy program designed for?

MM: We service across the continuum of care from inpatient to outpatient therapy under the core services of physical, occupational, and speech. To break that down even further, the goal of physical therapy is to help restore and improve functionality such as treating balance to reduce the risk of falls, strengthen lower extremities, and posture correction to improve walking ability. We can help someone transition to an assisted device—from a walker to a cane. Occupational therapy helps an individual gain the skills needed to perform daily activities as independently as possible such as getting dressed, cooking a meal, and helping with upper body posture. Speech therapy is based in language and communication issues, but it can



also do a lot for those who suffer from swallowing disorders. We provide a special diet to help an individual regain their ability to enjoy their food once again.

Our program treats musculoskeletal and neurological conditions as deconditioning and generalized weakness.

CE: How do you motivate patients who are struggling with pain or mobility issues?

MM: Our approach is to lead with education. We explain the source of the pain, the related anatomy, and why their symptoms are occurring so that they understand why things may be difficult or uncomfortable for them. From there, we focus on reducing the pain. Pain control is the gateway to achieving optimal function. This is frequently

accomplished through targeted strengthening exercises, or the use of modalities like electrical stimulation and hot/cold therapy.

We're always monitoring progress and adjusting the pain plan accordingly so the individual knows that if the first solution doesn't work, there's always an alternative.

CE: Speaking of plans, no two patients age alike so how do you go about creating a plan for patients whose ability levels and goals vary?

MM: We conduct a thorough evaluation of the patient's condition and needs, including their health history. If someone comes in for knee pain, we assess the foot, the hip, ankle—a whole-body examination, really—and develop a plan to target the necessary areas. That person could have an issue with foot alignment, while the next knee sufferer may have weakness in the hip muscles, causing a greater stress on the knee. The current level of function is assessed, and we establish the desired treatment outcomes based on their needs.

CE: What does the therapy space look like?

MM: We have one main therapy gym that all our patients use. It's brand new and quite spacious with state-of-the-art equipment set to address every level of care. The therapists and their patients all work together in that space. There are no separate departments.

Within our gym is a walking lift system to help support the individual when they're standing. That way, the therapist can focus on walking with the individual. Plus, it helps if someone has a weight restriction for a limb. It will allow us to use our hands for moving or stabilizing a limb, versus holding them up. We also have a cable strengthening system to strengthen core and upper body. A nice, brand-new bike for upper body that works the arms and the legs at the same time.

For those who live in the long-term care center, we will work on mobility in their personal environments and facilitate care-giving treatment there.

CE: Do you have a success story of an individual who has undergone therapy through Catholic Eldercare's program?

MM: We had a resident who came to us with a fracture repair of her upper neck. At first, she wasn't able to sit without assistance. Walking even a short distance required a lot of help. Fast forward to today. Her strength has improved steadily. Recently, she walked 750 feet and I was merely there as a back-up—she did it all on her own. We've addressed her pain due to arthritis and it's been rewarding to watch that progress in her. Even if someone is here for a few weeks, it's amazing to witness their transition back to health and back to home. It can really be a world of a difference.

CE: What differentiates Catholic Eldercare's therapy program from others?

MM: I've held this occupation for 14 years. March will mark just one year with Catholic Eldercare and I can truly say that it is the best organization I've worked at. Their person-centered approach sets them apart from other communities. They truly live out their mission every day.



Make a Difference, Donate Online!

Visit www.catholiceldercare.org. It's secure, quick and meaningful.

GENEROUS GIVING

Thank you! Your financial gifts support the engaging programs and activities residents enjoy and help offset the funding gaps in care costs.

During the fiscal year of October 1, 2015 to September 30, 2016, individuals, businesses and foundations donated approximately \$280,000.

YOUR ANNUAL FUND GIFTS:

- make possible a Pastoral Care Program that helps enrich the lives of seniors through worship, prayer and the discovery of new creative gifts.
- ensure a strong Volunteer Program that brings neighbors and residents together in friendship and engaging activities.
- support the Adult Day Program which eases isolation and keeps seniors involved, active and independent.
- support staff improvement and mentoring programs which enhance the relationship with the residents.
- support the Subsidy Fund for seniors whose financial resources may be depleted.

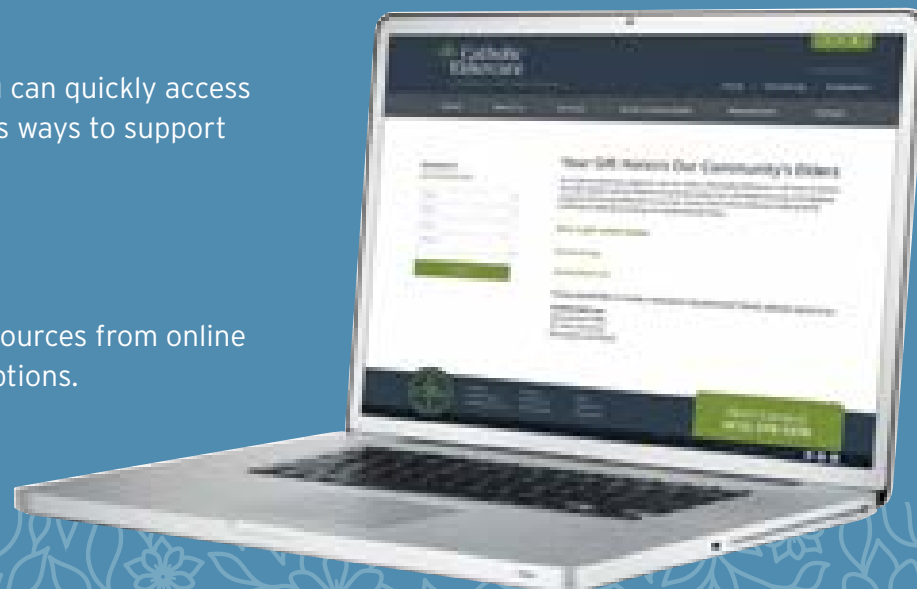
CAPITAL FUND:

- supports capital needs.

QUICK CLICK TO GIVE

By visiting www.catholiceldercare.org, you can quickly access comprehensive information on the various ways to support the mission.

1. Go to www.catholiceldercare.org
2. Click on "Giving."
3. Select from a comprehensive list of resources from online annual fund giving to planned giving options.



Honor a Loved One With a Tribute Gift

A tribute gift is a great way to honor someone important to you and support the Catholic Eldercare mission. Your gift lets everyone know that a loved one or friend has been an important part of your life.

A TRIBUTE GIFT CAN:

- honor a parent or grandparent on Mother's Day, Father's Day or other holidays;
- commemorate a special occasion such as a birthday, wedding, anniversary, graduation, recital or other memorable moments;
- recognize the military service of a veteran;
- and, honor a beloved staff member or volunteer.

For more information, visit www.catholiceldercare.org and click on **Giving**

WAYS TO GIVE:

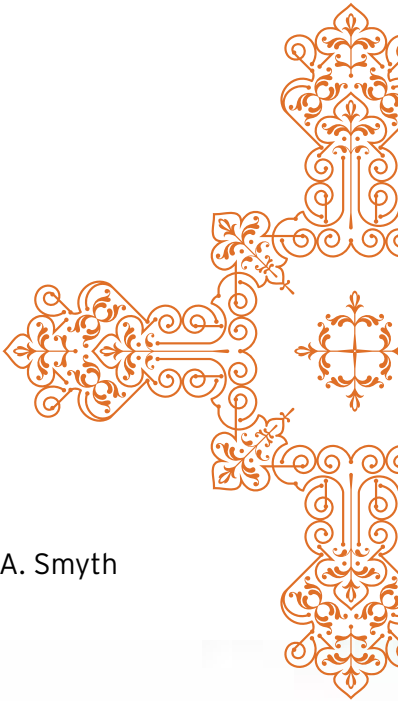
To learn more about how you can support the work of Catholic Eldercare, contact Kristine A. Smyth at 612-362-2494 or ksmyth@catholiceldercare.org.

Have you heard the (written) word?

We launched our very first blog!

We hope you find it a valuable resource as we highlight the unique experiences that our communities offer. Expect to hear from our people—residents, staff, volunteers, members of the community—whose collective experiences represent life at Catholic Eldercare. Our goal is to show you that we are a place of community and one in which people thrive physically, spiritually, and emotionally.

You can find it (and subscribe to it!) at: catholiceldercare.org/newsevents/blog



Your gift means so much.

Catholic Eldercare would like to extend a heartfelt thank you to the many wonderful individuals, corporations, foundations and associations for their generous support of our mission. Every dollar makes a significant difference in our ability to continue to deliver excellent care in a loving and beautiful environment designed for the growing and changing needs of our current and future residents. Without their support, we would not be able to run our programs that benefit the lives of many seniors.

These gifts were provided from October 1, 2016 through March 30, 2017. Every effort is made to ensure accuracy. If you see an error or omission, please contact the Office of Development at 612-362-2430. For a comprehensive list of all 2015-2016 donors, please visit: catholiceldercare.org.



ANNUAL FUND

Denise Andersen	Albert and Kimberly Hofstede Jr.	NextEra Energy
Ken Baltes, Ph.D. and Dorothy Elion	Louise Hotka and Jill Meyer	Laurence J. Niederhofer
Thomas and Margaret Beck	Imagewërks Marketing	Jillian O'Brien
John and Patricia Belian	Janice Gardner Foundation	Liz O'Daniel
William and Virginia Bennett	Phillip Jares and Mark Hager	Carolyn E. Olson
Judith J. Bertrand	Tony and Betsy Jaros, Jr.	Mary Claire Owen
Helen Bloomquist	Judith and Randy Jenniges	Annette Pantel
Kevin Boehmer	Daniel and Dianne Johnson	Andrew S. Pappas
Nancy Bonanno	JPMorgan Chase Foundation	Maureen and Gerald Pearo
Helen Brya Estate	John and Patricia Kestner	John Pepera
Alice Cantril	Ruth Kildow	Anthony and Mary Persons
Richard and Michelle Cummings	Kim and Warren King	James and Nancy Pirkle
Diane and Peter Donnino	Mary Louise Klas	James Polakowski
Annella and Thomas Dosdall	Dr. Doug J. Kohlan	Silas and Patricia Prok
Dusty's, Inc.	Jamie Korf	Joyce Pyka
Elizabeth C. Quinlan Foundation, Inc.	Ladies Ancient Order of Hibernians, Hennepin County Division 9	Michael and Darcel Rainville
Judy and Richard Fehn	Dorothy Laliberte	Joseph and Marilyn Rauch
Carol Ferguson	Roger and Jeanne LaLiberty - Books Are Fun	Donald and Jean Regan
FMA Seniors	Barbara Larson	Alfred and Billie Reger
Aileen Gaash	Chuck Lenzen	Charles and Diane Roberts
Gilligan Foundation	David Loomis	Elizabeth Rouleau Estate
Robert Godava	Kathleen Malchow	Adam Rusinak
Janice M. Godlewski	Patricia McCauley	William and Mary Jo Rusinak
William and Ieva Gorrilla	Francis and Ginny McGoldrick	Jerome and Rita Ryan
Daniel A. Gourde	Janice and Ronald Michalov	Mary Catherine Ryan
Jean and Bert Greener	Lucille Miller	Gladys Rylel
Steve and Jan Grothjan	Ray Mlinar	Saint Clare's Monastery
Dr. Anna T. Hampel	Christopher Moore	Dr. John and Dolores Salchert
Earl and Eileen Herzog	Joan E. Murray	Joseph Satter
	Sigrid Nelson	Marie M. Sawochka
	Jim and Cheryle Nesser	George and Annalise Sayer
		Sayer Charitable Foundation
		Schaaf Floral, Inc.
		Lois Schardin
		Eileen E. Schlentz

Molly Schreiner
Ronald and Mary Schuster
Schwab Charitable
Connie Schwinghammer
Charles and Yvonne Selcer
Phyllis Senger
Kathleen T. Shearon
Joseph T. Siwek
Kristine Smyth
Peter and Barbara Smyth
Suzanne J. Snyder
Bob and Patti Spinner
Joseph Stanek
Greg and Bonnie Stasik
Anne M. Steiner
Donna Stelmaszewski Estate
Mark and Lynette Stenglein
Ralph and Grace Strangis
Scott and Sandy Summerfield
Harold and Ione Swanson
Thomson Reuters
Robert Tryon
Robert and Jeanne Tupa
United Way of Metropolitan Chicago
Joesph and Nancy Utoft Charitable Fund of the Catholic Community Foundation
Kevin and Dana Vetsch
Judy Voss
Donna M. Walicki Estate
Wells Fargo Advisors, LLC
Jack and Jane Whiteford
Debbie and Paul Woodward

IN HONOR ANNUAL FUND

Merle Erickson Joan and Michael Petersen
Tom Glodek's 80th Birthday James Murzyn
Dan Johnson Lores Vlaminck
Yvonne Mastian Steven and Kathy Wee
Nursing Staff at RVE John E. Fox
James, Beth and Roxy Zucco Catherine Zucco

IN MEMORY ANNUAL FUND

Jim Abicht Ron Abicht
Betty Ackerman Charity, Inc.
Ted Anderson Cynthia J. Spiczka
Patrika Arnold John J. Benkufsky Dave Mittelstaedt
Phyllis Baldwin Miriam J. Baldwin
Elsie Bergman Faye Ellena
Caroline Birk Clarence J. Birk
Mary Alice Blais Barbara Gacek
Mickie Bodine Constance R. Kollmann
Charles Bonanno Lee and Nancy Flandrich Damon Peters Nancy Todd Mark and Sandra Wysong
Bernadette Borman Robert Borman
Josephine Brama Joan Crawford-Dietsch
Teresa Bruneau William J. Bruneau Carol Bruneau-Malson
Richard Brustad Ann E. Calvert Marilyn and Jimmy DuBay

Helen Brya Catholic Community Foundation Jan and Tom Chlebeck Mark and Andrea Ebner Kim and Bruce Steppe
Peter Cafferty Robert and Teresa Vetter
Arthur Campbell Janet M. Campbell
Victoria L. Carter Maribeth Baldinelli Daniel G. Carter
Helen Casey William R. and Eleanore V. Pederson
Patricia Ann Cavaleri Joseph Cavaleri
Susan Celusnak John and Rosalie Halling
Rose A. Claesgens Ann Claesgens
Kenny Corsaw Terry and Eugene Fink
Gordy Cosgrove Mary K. Cosgrove and Scott G. Payne
Phyllis Cruciani Charity, Inc.
Thomas Cullen Mary Ann and John Kaczmarek
Janet Dachow Rodney Beyer Ryan Beyer Sarah Beyer Wayne and Arlene Birkness Daryl and Kathy Faucett Joe and Lisa Giertych Justin and Jessica Maas Tyler Maas Sam and Kaitlin Meyers Matt and Amy Noble Lucille Varney
Raymond DeGidio Phyllis R. Hupp
Thais Dugan Dan and Carol Forby
Rosemary Dunn John D. Dunn M.D., J.D.
Isabelle Durenberger Mark and Barbara Durenberger
Frank and Alice Dziedzic Their Daughters
Laura Erickson Karen and Richard Carney
Mary Ann Forsmark Linda and David Olson

Mary and Richard Gazda Kenneth Gazda
Kathleen Geng Bonnie Aanestad
Molly Gillespie Richard and Nancy Allen Jeanette P. Andersen Deborah A. Anderson Katie Bailey Bill Baron Baron/Hauschild Family Fund Bevlin Bartels Donna Battaglia Milton and Paula Bellin Francis Bielinski Christopher Blasewitz Philip and Pam Broat Grace Brown Cadene Burdik Raymond and Vivian Byrne Catalyst Foundation Joseph Cavaleri Karl and Constance Charipar Martin and Barbara Costello David and Catherine Dooley Celeste Elstad Roberta Erickson Sharon Fitzgerald Carole Flavin Dan and Carol Forby Nan Fraser Bob and Charlotte Gavion John and Jacqueline Gillespie Barbara and David Gillham Maureen Golden Thomas Green Richard and Richelle Heck Francine and Janelle Heikkila Barbara J. Higgins Walter and Karen Hinz Julian Hook Ed and Peggy Howard William and Julia Kallenberg Lola Karls Glenn and Laurel Keitel Mary Joan Kelly Joseph Kenney Mary Killalea Lawrence and Jane Koenig John and Mary Kowles Maureen Kucera-Walsh John and Kathryn Lachenmayer Francis and Sandra Launstein Lloyd and Margaret LaValle James and Dorothy Leigh

Steve and Ann Lewis Karen Linsmayer James and Nancy Litecky Christopher and Mary Loetscher Rita Mach Cecelia A. Marrin Daniel Marrin Jim and Jane Marrin Kevin and Anne Marrin William and Peggy Marrin Susan and Tom McGuire Michelle Mueller and Bill Smith Marie Nelson Jeanette Ness-Blasewitz Nancy Ninteman Robert O'Hara Lydia Orstad William R. and Eleanore V. Pederson Jose Peris and Diana Gulden Joanne Rabatin Ronald and Virginia Rengel Mary and Peter Ritten John and Barbara Roban Jill Rowland Mary Ann Russell Timothy P. Russell Saint John's Abbey Carolyn Sawyer Dan and Carol Forby Nan Fraser Bob and Charlotte Gavion John and Jacqueline Gillespie Barbara and David Gillham Maureen Golden Thomas Green Richard and Richelle Heck Francine and Janelle Heikkila Barbara J. Higgins Walter and Karen Hinz Julian Hook Ed and Peggy Howard William and Julia Kallenberg Lola Karls Glenn and Laurel Keitel Mary Joan Kelly Joseph Kenney Mary Killalea Lawrence and Jane Koenig John and Mary Kowles Maureen Kucera-Walsh John and Kathryn Lachenmayer Francis and Sandra Launstein Lloyd and Margaret LaValle James and Dorothy Leigh
Steve and Ann Lewis Karen Linsmayer James and Nancy Litecky Christopher and Mary Loetscher Rita Mach Cecelia A. Marrin Daniel Marrin Jim and Jane Marrin Kevin and Anne Marrin William and Peggy Marrin Susan and Tom McGuire Michelle Mueller and Bill Smith Marie Nelson Jeanette Ness-Blasewitz Nancy Ninteman Robert O'Hara Lydia Orstad William R. and Eleanore V. Pederson Jose Peris and Diana Gulden Joanne Rabatin Ronald and Virginia Rengel Mary and Peter Ritten John and Barbara Roban Jill Rowland Mary Ann Russell Timothy P. Russell Saint John's Abbey Carolyn Sawyer Dan and Carol Forby Nan Fraser Bob and Charlotte Gavion John and Jacqueline Gillespie Barbara and David Gillham Maureen Golden Thomas Green Richard and Richelle Heck Francine and Janelle Heikkila Barbara J. Higgins Walter and Karen Hinz Julian Hook Ed and Peggy Howard William and Julia Kallenberg Lola Karls Glenn and Laurel Keitel Mary Joan Kelly Joseph Kenney Mary Killalea Lawrence and Jane Koenig John and Mary Kowles Maureen Kucera-Walsh John and Kathryn Lachenmayer Francis and Sandra Launstein Lloyd and Margaret LaValle James and Dorothy Leigh
Abbie Gilligan Griffin Kevin and Linda Collins
Stella Godava Robert Godava
Francis Halling John and Rosalie Halling
Robert W. Hannah The Hannah Family

Albert Hofstede
Mary Brady
Boyd Browman
Mary Ann Campo
Walter and Patricia Dziedzic
Syd and Kathryn Foster
Glenn Catholic
Senior Communities, Inc.
The Hannah Family
Diane and Tony Hofstede
J. A. Wedum Foundation
Phyllis Kahn
Anthony LaMere
Sr. Duchesne Maxwell, O.P.
Kenneth and
Janice Mrugala
Michelle Mueller and
Bill Smith
Frances A. Nalezny
Carolyn E. Olson
Lawrence and
Judith Pohlen
Mark and Karen Rauenhorst
Carolyn Sawyer
Vicki A. Schaaf
Jim and Sandy Strauss
Lores Vlaminck

Kathryn M. Houlihan
Scott and Therese Campbell

Beulah Hreha
David and Margie Hreha

Antoinette Hunstiger
Aaron Milgrom
Helen Pollack

Eugene and Antoinette Hunstiger
Harriet Hunstiger Campbell

Carolyn Igoe
Terri Aberg
Helen Trepanier

Cecilia Inorehus
Jim and Ann Marie Zellmer

Rosemond Jacob
Bernard Jacob

Emil Jakubic
Patricia Mans

Marien Jasinski
Kathryn Mullally

Audrey Jewett
Michael and Carla Battaglia
Richard Durnin
Greta Grosch
Randall and Hiedi Isaak
Cathy Jewett
Tim and Carol Jewett
Jane Laurance
Robert and Jean Lawson
Nancy Paciotti

Russell and June Johnson
Mark R. Johnson

Marguerite and Marvin Kempf
Robert and Janet Berkseth

Marilyn Kennedy
Frank and
Jacqueline Padula

Josephine Kollar
Joanne Braun

Helen Kosik
Rosemary Salzwedel

Constance Marie Koteles
Joe Koteles

Virginia Koziol
Rex and Mary Jo Friesleben

Jean Krause
Tim and Cheryl Krause

Ruth Kron
Stanley Atkinson
Keith Smith

Margaret Laurent
Terence and Camilla Hughes
Kate Mackin

Loretta Lenton
J. Broin
Darlene Coffman
Richard and
Michelle Cummings
Mildred Deschepper
James and Cheryl Fraser
Anne T. Gibbs
The Grabau Family Trust
Donald and Patricia Helps
Richard and Terri Kaster
Jerry and Mary Keenan
Barbara Kinney
Marilyn Kranz
Dave and Janis Langsdale
William and Marlene Otto
Phillip and
Elizabeth Peterson
William and Jeanne Rose
Mary E. Warden

Mary Loberg
Leo and Betty Loberg

Edward Luniewski
Mary Ann Luniewski

Enoch and S. Malick
Irene E. Smith

Delores Marchiafa
Mark and Valerie Fisher
Molly Martin

Annabel Marcouille
Chuck and Myrna Bladhome
Kathleen Bohley
John and Liz David
Craig and Debbie Ellestad
Thomas and Mary Fogarty
Kenneth D. Genskow
Judith Glander
Mary Lee Hansen

Larry and Sylvia Hicks
Marion Houle
Ardy Hoye
Cindy Jurgensen
Tom, Jane, Chris,
and Renee Loso
Gerald Miller
Jean Ness
Nancy Nies
Barbara Otto
Eric Otto
Jane and Christopher Otto
Karen Perez
Jill Perry
Pat Reed
Carol Riach
Sherman W. Sandgren
Lorly Schick
Shady Lawn Farm LLC
Laura Stonehill
Wayne and Marge Szczeck
Lynne Voss

Mary Maslowski
Frank and Dolores Genosky

Boni Mastrian
Gerald and Kathleen Ludke

Ralph Mathison
Thomas and
Judith Mathison

Ed and Mary Jane McDermott
Martha McDermott

Elizabeth M. Miller
Helen Klaers Bentrud

James Moore
Barbara M. Sitzman

Theresa Morzinski
Joy and Kent Robbins
Mark and Joan Strobel

Thomas and Patricia Mueller
Michelle Mueller and
Bill Smith

Dominic and Irene Nalezny
John and Sue Rau

George Terry Namie
Ronald and Shirley Och

Johanna Niziol
John and Sandra Dimond

Tom and Alice Ondrey
David and
Michaeline Loomis

Irma Paffell
Jeanette P. Andersen

Roy Pearo Jr.
Joe and Char Wentzell

Arthur C. Pederson
William R. and
Eleanore V. Pederson

Arthur C. Pederson, Jr.
William R. and
Eleanore V. Pederson

Bernice Pederson
William R. and
Eleanore V. Pederson

Irene Perish
Judy Yarwood
Diana Otte

Arnold Petricka
Judy and John Benkufsky

Anna Ramolae
Michael Ramolae

John Rau
John and Sue Rau

Ronald Richardson
Robert and Virginia Bertch
Ronald and
Mary Ellen Richardson

Sr. Ruth Roland
Ann Marie Palmisano, O.P.

Andy and Dorothy Salwe
Tom and Arlene Madden

James Sarna
Robert and Virginia Bertch
Jim and Cheryl Nesser

Br. Michael Schain
Sue Weiner

Henriette Schilling
Scott and Therese Campbell

Barbara Schramm
Joseph Cavaleri
Rafael and Karen Gutierrez
Barbara, Paul, David,
and Douglas Reville
Jeanne Will

Sally Shannon
Anonymous
Ted and Elaine Bergman
Barbara Helling
Richard and Patricia Hughes
Marciell Johnson
Bridget Kope
Philip and Winnifred Kope
Monica Mullerleile
Kevin and Nancy Shannon
Margaret Turk
Mark and Sandra Wysong

Bernice Shepprit
Carol L. Korogi-Reeves

Janet Sivanich
Donald and Caryn Sivanich

Stella Smekta
Judith Smekta Pettit

Anne Smith
Deborah and Brian Brattlof

Jerry Smith
Irene E. Smith

William and Agnes Smith
Irene E. Smith

Genevieve Sporny
Marlys Sporny

Ann Stasik
Barbara Baden

Francis Steffens
Alex and Kathleen Dehmer

Joseph and Clara Steffens
Richard and Helen Steffens

Ann Svec
Darla Pulles

Dolores Svobodny
John and Marlene Moffat

John Thoeny
Valeria Thoeny

Peter and Wanda Tobias
Thomas and Candice Tobias

Evelyn Turgeon
Richard and
Sharon Turgeon

William Vasquez
Sherburne County
Employees

Donna Walicki
Doris Mruz-Partyka
Maria Samaniego

Catharine Wheeler Smith
Deacon and
Mrs. William Smith

CAPITAL FUND

Ken Baltes, Ph.D. and
Dorothy Elion

Jennifer Bendel-Artman

Marilyn and Jimmy Dubay

MATCHING GIFTS

Amerprise Finanical Employee Gift Program
Kyle Heidgerken
Diane Marget
Kathleen Miller
Robert Muffelman

U.S. Bank Foundation Employee Matching Gift Program
Anonymous

CHAPEL

Anonymous
Kathleen Archer
Rosemary Bedor
Michael and Monica Bianchi
Joe and Sheila Biernat
Sharon Bittick
Marie Bliss
Bernadette Botoshe
James and Cheryl Brandes

Steve Brandes
Rev. John F. Brandes
James and Pat Bumgarner
Carolyn Casserly Carter
Joseph Cavaleri
Rachel Chin Fu Chen
Rosemarie Clark
David Lee Funeral Home
Maureen DeSutter
Rosemary and
Dennis Drevniak
Joan Dudek
Gregory J. Evans
Dan and Carol Forby
Bryan Fryc
Dante and Maria Gabriel
David and Katherine Gooley
Olive Hachlowski
Theresa Hansen
Terry and Diane Hansen
Bill and Kathy Hanson
Kathleen Healy
Linda and Dale Herron
Tim and Carol Jewett
Ena Joseph and Paul Wood
Laverne Kallunki
Kapala-Glodek Funeral Home
Ashley Karkula
Kathy Karkula
Dave and Connie Kassing
Joyce A. Knutson
Karen Kohl
Kozlak Radulovich Funeral
Chapel
Richard and Lorraine Kuklock
Ladies Ancient Order of
Hibernians, Hennepin
County Division 9
Dave and Janis Langsdale
Kristi and Michael Lassegard
Mary Loizeaux
Maria Victoria Magsalin
Mary Martichuski
Jerome and Pauline McAllister
Geraldine C. McCollow
Elizabeth McDonnell
Paul McHugh
Michael McHugh
Rose McMurchie
Robert and Kathleen Mellas
Maxine Narog
Ramona Neeb

Lillian Nelson
Margaret O'Leary
Andrew S. Pappas
Joanne Rabatin
David and Kathryn Rennie
Marihelen Rhoe
Cynthia Richter
Donald Richter
Barbara Rogers
Doris Roth
David F. Ryan
Barbara Salem
Marie M. Sawochka
Lois Schardin
Richard D. Shupien
Kristine Smyth
Marlys Sporny
Ellen Stein
Marie Trepanier
Paul Trepanier
Robert and Jeanne Tupa
Stephanie M. Villagomez
Washburn-McReavy Funeral
Chapels
Mark and Beth Weinberger
Lorraine and
Joseph Weinmeyer
Teresa and Robert White
Donald and Lydia Zappa
Antoinette M. Zwolski

SISTER RUTH ROLAND SOCIETY

Ken Baltes, Ph.D. and
Dorothy Elion

Alvina Bartylla[†]

Mary Virginia Betlach

Elizabeth Bonnes Estate[†]

Lidwina Buchwald Estate[†]

Donald G. Campagne Estate[†]

John[†] and Veronica Commers

Marion Critelli Estate[†]

Lucille Damm Estate[†]

Bernice C. Decowski Estate[†]

Regina A Dinhoff Estate[†]

Mae LaVonne Ecklund Estate[†]

Ada B. Eller Estate[†]

Dorothy Marie Flynn Estate[†]

Thomas E. Gainor

Loretta R. Gliniany[†]

Thomas F. Glodek

Geraldine Grajeda Estate[†]

Angeline F. Guminga Estate[†]

Mable Halloran Estate[†]

Barbara Hedges Estate[†]

Rev. John M. Hofstede

Mary D. Hungate[†]

James E. Indrehus

Shirley Korblick Estate[†]

Margaret T. Manley Estate[†]

Antonio Martinez Estate[†]

John C. Matlon Estate[†]

Thomas and Susan McGuire

Barbara Mead[†]

Agnes Mohr Estate[†]

Margaret F. Mulcare Estate[†]

Joan E. Murray

Karlis Neimanis Estate[†]

James and Cheryl Nesser

Bernard J. Newinski

Bruce Nolan

Mr. and Mrs. Richard Palen

Anthony J. Pantano Estate[†]

Mr. and Mrs. Ralph Clinton Peabody

Adam and Virginia Piecek Estate[†]

Leo E. Rainville Estate[†]

Wallace Rainville Estate[†]

Elizabeth A. Rouleau Estate[†]

Margaretha F. Santha[†]

Mary J. Schubert

Margaret J. Schweizer Estate[†]

Stuart S. Seim

Luella L. Simon

Dolores E. Sisson Estate[†]

Kristine Smyth

Jack Spillane, Jr.

Florence W. St. Claire Estate[†]

Donna Stelmaszewski Estate[†]

Joseph and Pamela Strauss

Charles E. Sullivan and
Sandra West

Dena Tarnowski Estate[†]

Eugenia R. Taylor

Donna Walicki Estate[†]

Mr. and Mrs. John D. Whalen

Alan Winters Estate[†]

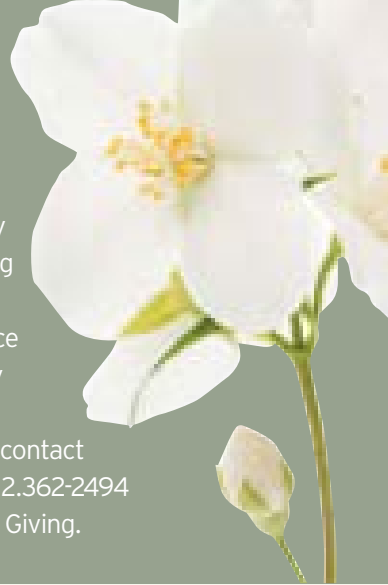
Stanley Wruck Estate[†]

[†] Deceased

Leave a legacy

We wish to express our profound gratitude to an anonymous donor who maintained close ties to our community. A former graduate of St. Anthony of Padua Girls High School, this generous individual donated \$5,000 for five years running (2010 - 2015) and left a planned gift of \$150,600 to Catholic Eldercare in her will. Thanks to her acts of benevolence, this legacy gift will impact our programs to better serve the needs of our older adults for many years to come.

The Sister Ruth Roland Planned Giving Society enables you to support the spiritually-enriching pastoral care and other programs that bring meaning to each day. Your estate or inheritance gift ensures Catholic Eldercare residents enjoy dignified lives in a safe, loving home. For more information on planned giving options, please contact Director of Advancement, Kristine Smyth at 612.362-2494 or visit www.catholiceldercare.org and click on Giving.



Carolyn Olson remembers Catholic Eldercare Board Member Dick Brustad

"I went to Elsie's for lunch the other day and one of the waitresses came up to me and said 'Carolyn, I haven't seen that man you sometimes have lunch with,'" says Carolyn Olson, former Catholic Eldercare Board Member and President of the Greater Metropolitan Housing Corporation. "I said, 'Dick Brustad?' and she nodded and asked 'Is he okay?' It's just that we haven't seen him in a while and he's the nicest man, always asking questions about our families and leaving such generous tips."

Carolyn is describing her dear friend, Catholic Eldercare board member, and Minneapolis community fixture Richard Brustad, who passed away in January. Richard—fondly known to many as Dick—had a history steeped in urban development and affordable housing.



1/22/41 – 1/4/17

"I started working with him in 1973 when he was the Assistant Director of the Greater Minneapolis Metropolitan Housing Corporation," says Olson. "He was a great mentor to many people, always willing to meet with anyone who wanted to learn more about affordable housing."

Dick was instrumental in creating the policy that spread affordable housing into the suburbs, spearheading the Metropolitan Housing and Redevelopment Authority. He helped develop thousands of housing units across the Twin Cities, including the conversion of riverfront mill buildings into some of the finest condominiums in the city.

"He thought everyone should have a safe and affordable place to live, and that is what he worked for," says Olson. "He was especially talented at putting housing deals together. When Catholic Eldercare was in the stages of development, he sat down with the president of the company at the time to talk about his history with housing projects serving the elderly. From then on, he served on the board."

Dick's mother had spent her final months at Catholic Eldercare. "Dick would say to me, 'Carolyn, Catholic Eldercare has such a special place in my heart. Unless you have somebody who lives there, you don't truly understand just how wonderful it is.'"

His integrity and dedication are an inspiration to us all, and his contributions will live on indefinitely in the fabric of our city.

Volunteering: It Takes a Community

Rich life experiences are essential to our own personal growth: they've shaped us into who we are today. So imagine just how many valuable stories, lessons, and historic events our seniors have lived through, a treasure trove of experiences just waiting to be shared.

As a volunteer at Catholic Eldercare, you could be that much-needed friend, a listening ear, or a helpful hand. While the communities work together to build a strong network of compassionate care, we rely on the help of our volunteers to foster a positive environment that encourages socializing and making friends.

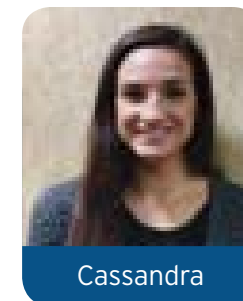
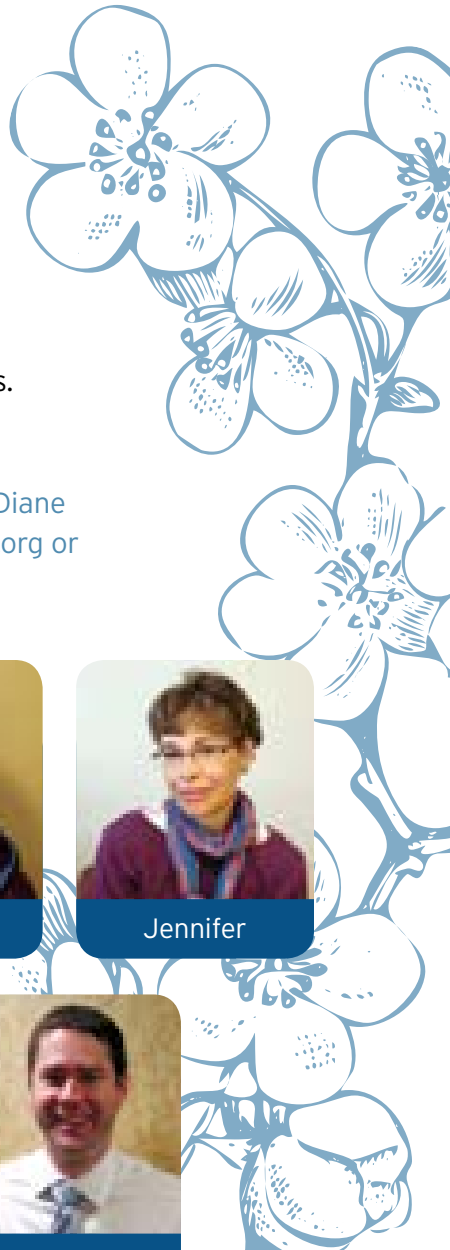
Want to be the first smiling face visitors see? Guest Services has just the spot for you. Have a knack for music you want to share with others? You may get directed to the Adult Day program. "We have opportunities that range from dining assistants to therapeutic activities helpers, housekeeping assistants and everything in between," says Diane Lucas, business development.

"My approach with volunteers is to learn what gifts and talents they can share and work with their availability to find a good fit for both parties." Like the gentlemen who help with dining services nearly every day during morning brunch. "They've

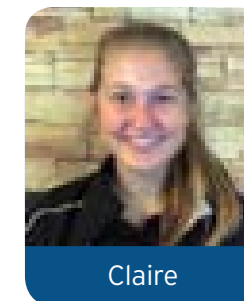
developed a personal connection with the residents by socializing, telling stories and jokes, and leading them in singing happy birthday as a group," she says. They even help out with the smallest of tasks like pouring coffee or getting napkins situated. "Their compassion and care is noticeable in the room, and the joy and engagement it brings to the residents is remarkable," Lucas says with a smile.

For those who have considered lending their gift of time to Catholic Eldercare, Diane offers up the following guidance. "If you have a soft spot for our older adults and you know you can learn so much from them, we want you at Catholic Eldercare," she says.

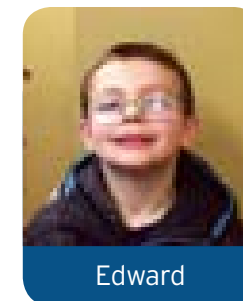
Come and see how you can make a difference: contact Diane at dilucas@catholiceldercare.org or call 612-362-2492.



Cassandra



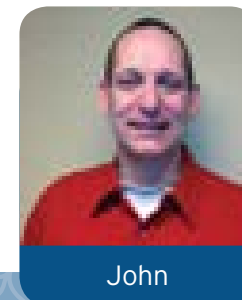
Claire



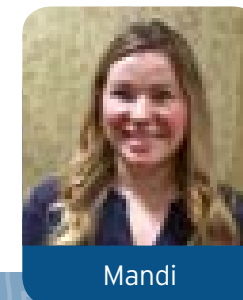
Edward



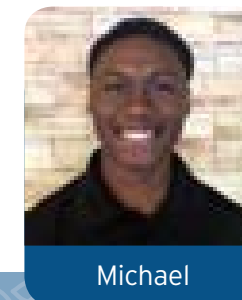
Jennifer



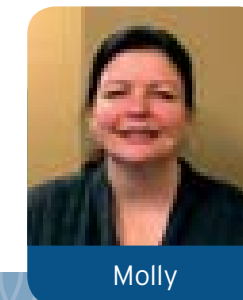
John



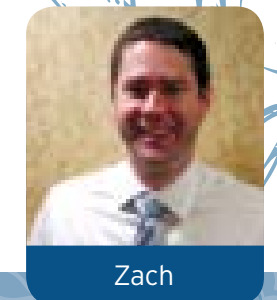
Mandi



Michael



Molly



Zach

Board of Directors

OFFICERS

Suzanne Snyder
Chair

Dan Johnson
President & CEO

Thomas M. Beck
Vice Chair

Marcus Merz
Treasurer

James J. Murzyn
Secretary

Michael J. Shasky
Chief Financial Officer

DIRECTORS

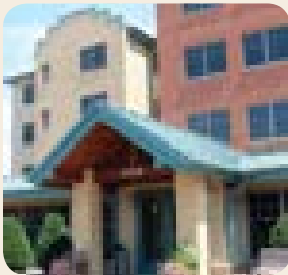
Kenneth G. Baltes
Rev. John Bauer
Mark T. Glodek
Robert J. Hanten
Rev. Glen Jenson
Penelope A. Moyers
Jeff Schrempp
Robert K. Spinner
Mark Stenglein
Lores J. Vlaminc
Beth A. Waterman

The Catholic Eldercare Community

CATHOLIC ELDERCARE BY DAY
ADULT DAY SERVICES

149 8th Avenue NE, Minneapolis • 612-362-2405

This program offers care and programming for the senior who may require modest assistance when a spouse or other loved ones are unavailable to attend to their needs. Adult Day also serves as a respite for family caregivers who may find it increasingly challenging to care for an older adult all the time. The weekday program is affordable and flexible. Clients may be eligible for financial assistance. Transportation can be arranged.



RIVERVILLAGE EAST
ASSISTED LIVING AND MEMORY CARE

RIVERVILLAGE NORTH
SUBSIDIZED LIVING

2919 - 2921 Randolph Street, NE • 612-605-2500

This inviting 107-unit senior campus, adjacent to St. Hedwig Church in Northeast Minneapolis, offers affordable market rate, assisted living apartments and memory care (East) and independent, subsidized units (North).

MAINSTREET LODGE
ASSISTED LIVING

909 Main Street NE, Minneapolis • 612-362-2450

This assisted-living residence includes 51 comfortable apartments. The Lodge is adjacent to the care center and St. Anthony of Padua Chapel.

ALBERT J. HOFSTEDE CARE CENTER
SKILLED NURSING AND MEMORY CARE

817 Main Street NE, Minneapolis • 612-379-1370

A 150-bed skilled nursing residence, with dedicated memory care floor. The nursing home is physically connected to St. Anthony of Padua Chapel for ease of worship and socialization opportunities.

TRANSITIONAL CARE UNIT
REHABILITATION SERVICES

149 8th Avenue NE, Minneapolis • 612-379-1370

A 24-bed skilled care unit designed to provide the perfect balance of advanced care and personal comfort needed to heal effectively after an illness, surgery, or hospital stay.

Catholic Eldercare Community Foundation & Affiliates

CONSOLIDATED FINANCIAL INFORMATION FOR THE YEAR ENDED SEPTEMBER 30, 2016

Consolidated Balance Sheet:

ASSETS:

Current Assets	\$3,628,688
Property and Equipment, net	\$26,020,453
Other Assets	\$11,469,797
Total Assets	\$41,118,938

LIABILITIES AND NET ASSETS:

Current Liabilities	\$3,118,115
Long Term Liabilities	\$17,213,645
Net Assets	\$20,787,138
Total Liabilities and Net Assets	\$41,118,938

Statement of Activities and Changes in Net Assets:

REVENUES AND OTHER SUPPORT

Nursing Home	\$13,215,819
Assisted Living and Home Care	\$5,322,260
Housing	\$943,283
Adult Day Care	\$429,550
Contributions	\$287,466
Other Support and Investment Income	\$207,744
Total Revenues and Other Support	\$20,406,122

EXPENSES

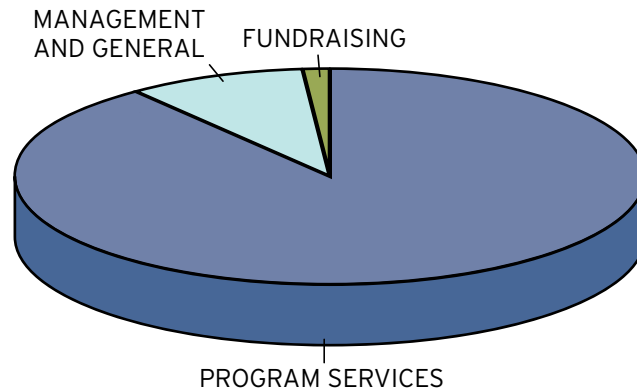
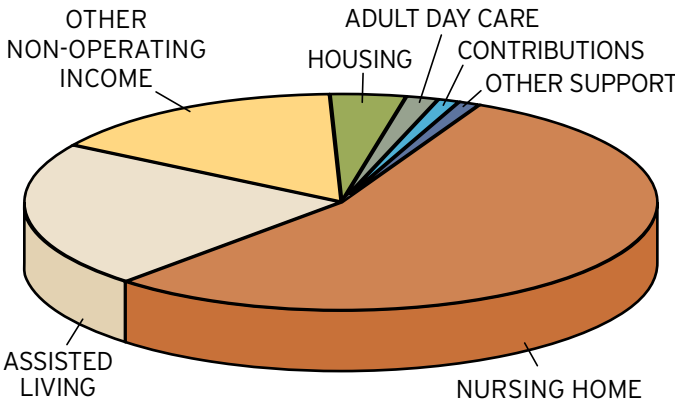
Program Services	\$17,920,138
Management and General	\$1,800,035
Fundraising	\$266,405
Total Operating Expenses	\$19,986,578

Excess (deficiency) of revenues over expenses	\$419,544
---	-----------

OTHER NON-OPERATING INCOME

Change in net unrealized gains on investments	\$325,110
Gain on sale of property	\$3,404,616
Total	\$3,729,726

Change in Net Assets	\$4,149,270
----------------------	-------------





817 Main Street N.E.
Minneapolis, MN 55413

www.catholiceldercare.org

Non-Profit
Organization
U.S. POSTAGE
PAID
Twin Cities, MN
Permit No. 2638

Upcoming Events

Family Ice Cream Social

Thursday, June 8, 5:30-7:00 pm

(unless construction begins on the outdoor space)

Petting Zoo

Tuesday, June 13, 1:00-3:00 pm

(unless construction begins on the outdoor space)

Classic Car Show

Wednesday, July 12, 1:00-3:00 pm (July 19 is the rain date),

Catholic Eldercare on Main, 817 Main St. NE, Minneapolis. 612-379-1370

Small steps. Big strides - 15th Annual Fall Luncheon

Thursday, September 14

Music by the DeLaSalle choir at the Earle Brown Heritage Center in Brooklyn Center

Transitional Care Unit Blessing and Mass

Thursday, October 19, 11:30 am

Community mass in the St. Anthony of Padua Chapel

For the latest upcoming events, please visit www.catholiceldercare.org



Join a team of compassionate, caring and dedicated individuals at Catholic Eldercare.

Discover the fulfillment that comes from providing an unmatched level of person-centered care our residents and families have come to know and love. We invite you to explore our career opportunities and see why Catholic Eldercare has offered the finest in senior services for over 30 years. Visit www.catholiceldercare.org/employment for more information, or contact Human Resources Manager Jaclyn Samuell at 612-362-2491.